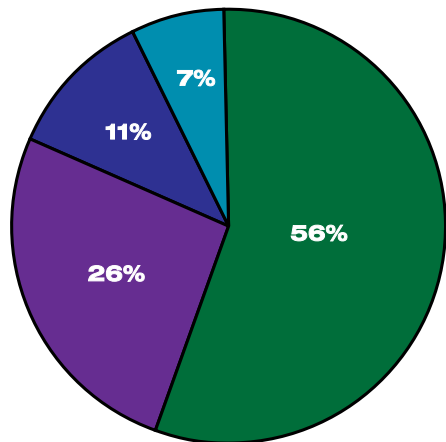


2007 FINANCIAL REVIEW

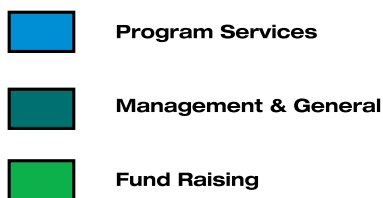
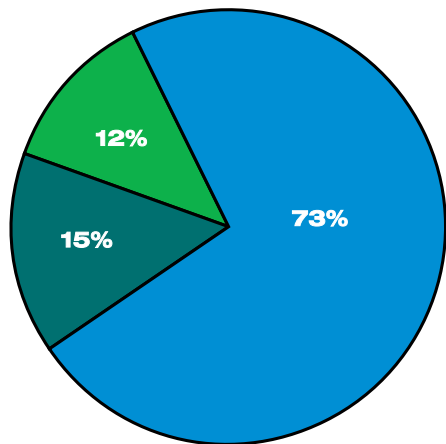


INCOME

Community Support	\$1,590,661	56%
Corporation For Public Broadcasting	\$730,591	26%
State Grant	\$311,984	11%
Earned/Other	\$207,330	7%

56% OF PBS39'S ANNUAL BUDGET WAS PROVIDED THROUGH COMMUNITY SUPPORT.

73% OF PBS39'S ANNUAL BUDGET WAS SPENT ON PROGRAM SERVICES.



EXPENSES — PROGRAM SERVICES

Programming and Production	\$1,971,702	46%
Broadcasting	\$712,751	20%
Program Information and Promotion	\$137,737	4%
Education	\$99,843	3%

EXPENSES — PROGRAM SUPPORT

Management and General	\$534,057	15%
Fund Raising	\$450,364	12%